



Belsize Avenue NW3

Parkheath
Sold on Service





Belsize Avenue, NW3

Asking Price £550,000

Share of Freehold

- A bright, south facing one bedroom apartment
- Gorgeous views of the communal gardens
- Set in this popular 1930's mansion block
- 15ft south facing balcony
- Over 600 sq ft on the third floor
- Lift, portorage, communal gardens and first come first served parking
- Share of freehold
- Bright 17ft reception with doors to balcony plus separate, sleek 10ft kitchen with a window
- Spacious 16ft bedroom with full width wardrobes
- Situated moments from all Belsize Park amenities



Parkheath
Sold on Service

Camden Tax band D

Belsize Park/Hampstead
208 Haverstock Hill
NW3 2AG
Sales 020 7431 1234
Lettings 020 7431 3104
nw3@parkheath.com

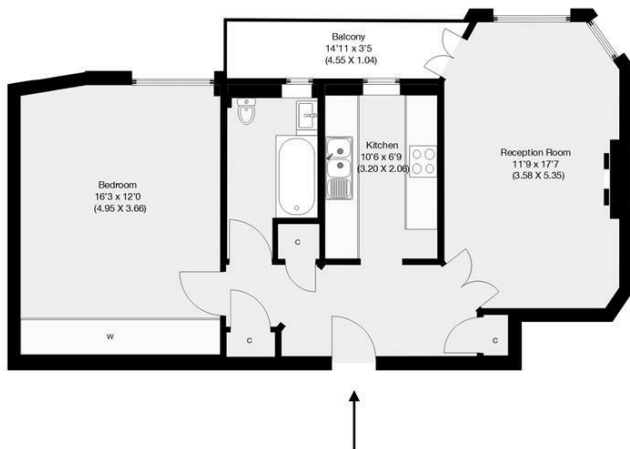
South/West Hampstead
192 West End Lane
NW6 1SG
Sales & Lettings
Tel 020 7794 7111
192@parkheath.com

Kensal Rise
54-56 Chamberlayne Rd
NW10 3JH
Tel 020 8960 4845
kensal@parkheath.com

Property Management
192 West End Lane
NW6 1SG
020 7433 6174
pm@parkheath.com

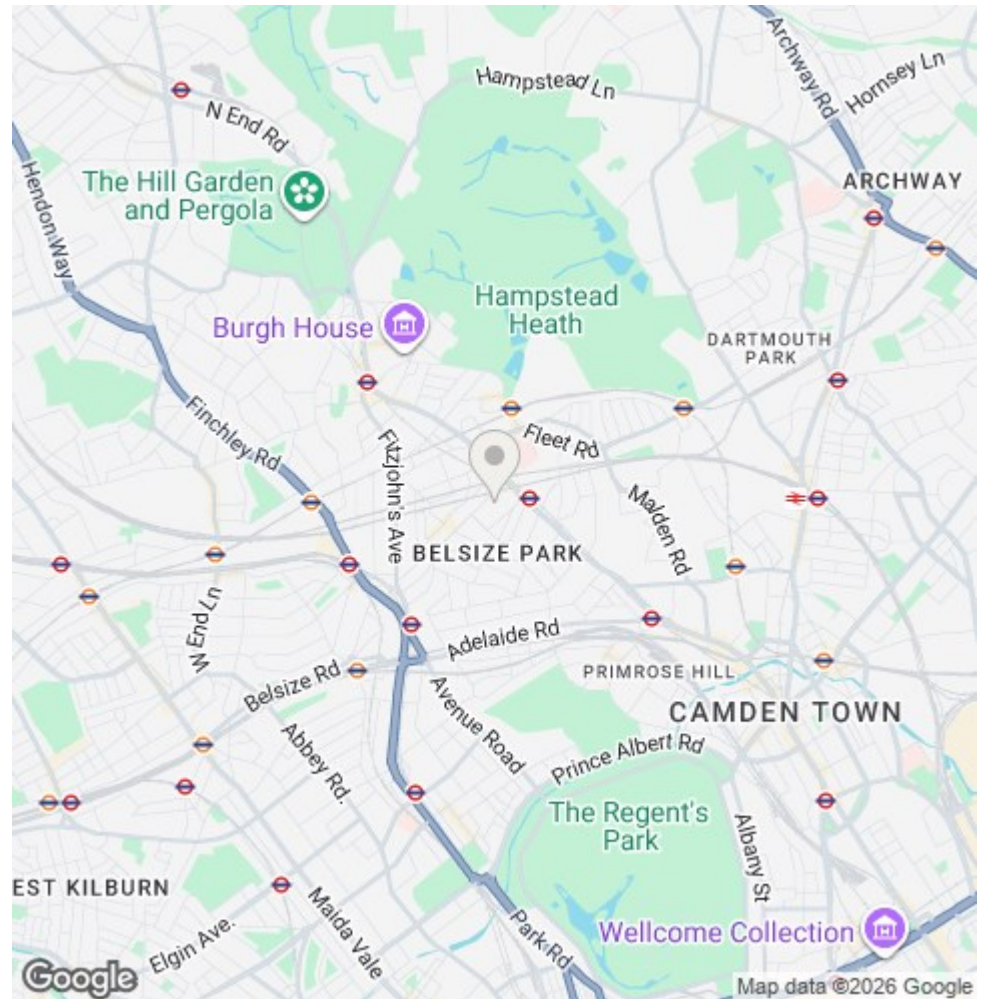
www.parkheath.com


 Hillfield Court, Belsize Avenue, London, NW3
 Approximate Gross Internal Area 57.18 sqm / 615 sqft



Third Floor

THIS FLOOR PLAN IS PRODUCED FOR PARKHEATH SUBMITTED BY ARCHIMEDIA web: www.archi-media.co.uk
 Whilst every attempt has been made to ensure the accuracy of the floor plan contained herein, measurements of doors, windows and rooms are approximate and no responsibility is taken for any error, omission or misstatement. These plans are for representation purposes only and should be used as such by any prospective buyer or lease. Specifically no guarantee is given on the gross internal floor area of the property if quoted on this plan and any figures given is initial guidance only and should be treated as such.



The particulars do not constitute part of an offer or contract. The particulars, including text, photographs and plans, are for the guidance only of prospective purchasers/tenants and must not be relied upon as statements of fact. The descriptions provided therein represent the opinion of the author and whilst given in good faith should not be construed as statements of fact. Nothing in these particulars shall be deemed a statement that the property is in good condition or otherwise or that any services or facilities are in good working order. All measurements are approximate